

Network Billed Mobile Vodafone Handbook

Version 1.09 2024



Introduction

[Why GiacomforNetwork Billed](#)
[Sign up to the Vodafone Portal](#)
[Why Vodafone](#)
[What's new?](#)

Business Evolve

[External Documents & Resources](#)
[About](#)
[Example Deals](#)

Business Integrated

[External Documents & Resources](#)
[Shared Data Plans - About](#)
[Data Pool & Shared Data Plan - Diagram](#)
[Unlimited Data Plans - About](#)
[Unlimited Data Plans - Diagram](#)

Additional Information

[MBB](#)
[Enterprise Edition & Business Optimiser](#)
[Meet the Team](#)

External Documents and Resources

[EU Roaming](#)
[Forms & Information](#)
[Spend Caps](#)
[Terms & Conditions](#)
[Network SLAs](#)
[Purchase Order Requirements](#)

View all tariffs and bonuses
within the [Library Guides](#) on
Cloud Market

Why Giacom for Network Billed Mobile

Partnering with Giacom gives you a strong offering for your customers thanks to our industry-leading network deals. We support you every step of the way in growing your business and boosting revenue opportunities.



Earn upfront with generous revenue share & bonus models



Network manages all billing & invoice queries



Manage & nurture the end-customer relationship



Utilise distribution agreements with Vodafone, O2 & EE



The widest choice of mobile tariffs & solutions



Regular updates & webinars to keep you up to date



Award-winning mobile support and specialist teams



Access to a wide range of mobile hardware



Free marketing toolkits & white-labelled collateral



Introduction

[Why GiacomforNetwork Billed](#)
[Sign up to the Vodafone Portal](#)
[Why Vodafone](#)
[What's new?](#)

Business Evolve

[External Documents & Resources](#)
[About](#)
[Example Deals](#)

Business Integrated

[External Documents & Resources](#)
[Shared Data Plans - About](#)
[Data Pool & Shared Data Plan - Diagram](#)
[Unlimited Data Plans - About](#)
[Unlimited Data Plans - Diagram](#)

Additional Information

[MBB](#)
[Enterprise Edition & Business Optimiser](#)
[Meet the Team](#)

External Documents and Resources

[EU Roaming](#)
[Forms & Information](#)
[Spend Caps](#)
[Terms & Conditions](#)
[Network SLAs](#)
[Purchase Order Requirements](#)

View all tariffs and bonuses within the [Library Guides](#) on Cloud Market

It's time to unleash the power of the new Cloud Market for Vodafone Business portal

Visit now



Introduction

- Why GiacomforNetwork Billed
- Sign up to the Vodafone Portal
- Why Vodafone
- What's new?

Business Evolve

- External Documents & Resources
- About
- Example Deals

Business Integrated

- External Documents & Resources
- Shared Data Plans - About
- Data Pool & Shared Data Plan - Diagram
- Unlimited Data Plans - About
- Unlimited Data Plans - Diagram

Additional Information

- MBB
- Enterprise Edition & Business Optimiser
- Meet the Team

External Documents and Resources

- EU Roaming
- Forms & Information
- Spend Caps
- Terms & Conditions
- Network SLAs
- Purchase Order Requirements

View all tariffs and bonuses within the [Library Guides](#) on Cloud Market

Why Vodafone



Resilience of VF Network

Vodafone are working hard to becoming a net zero business powered on 100% renewable electricity. By 2025 they aim to eliminate all emissions from their operations before hitting net zero in 2040



Future of 5G

Vodafone's 5G unlocks a new era of wireless intelligence that lets businesses act, respond and adapt in real time



Great Network

Running for more than a decade, the Mobile Industry Awards represent the gold standard of excellence in the industry with entrants representing the best and brightest the UK mobile industry has to offer. Vodafone Business has secured both the best network for business as well as the 5G Innovation of the Year Award



GigaCube

The GigaCube is the mobile broadband hotspot device. It connects up to 20 devices, using their WiFi capability, to the Vodafone network. This connectivity also includes 5G, subject to location. GigaCube plans are compatible with either a 4G or 5G Huawei router - please contact Sales Support for the latest pricing and availability



Awarded Most Reliable Network

London, Birmingham, Manchester, Liverpool and Leeds

Introduction

Why GiacomforNetwork Billed
Sign up to the Vodafone Portal
Why Vodafone
What's new?

Business Evolve

External Documents & Resources
About
Example Deals

Business Integrated

External Documents & Resources
Shared Data Plans - About
Data Pool & Shared Data Plan - Diagram
Unlimited Data Plans - About
Unlimited Data Plans - Diagram

Additional Information

MBB
Enterprise Edition & Business Optimiser
Meet the Team

External Documents
and Resources

EU Roaming
Forms & Information
Spend Caps
Terms & Conditions
Network SLAs
Purchase Order Requirements

View all tariffs and bonuses
within the [Library Guides](#) on
Cloud Market

What's new?

Promotional Offers

This promotion is available from 27th September until 1st November 2024.

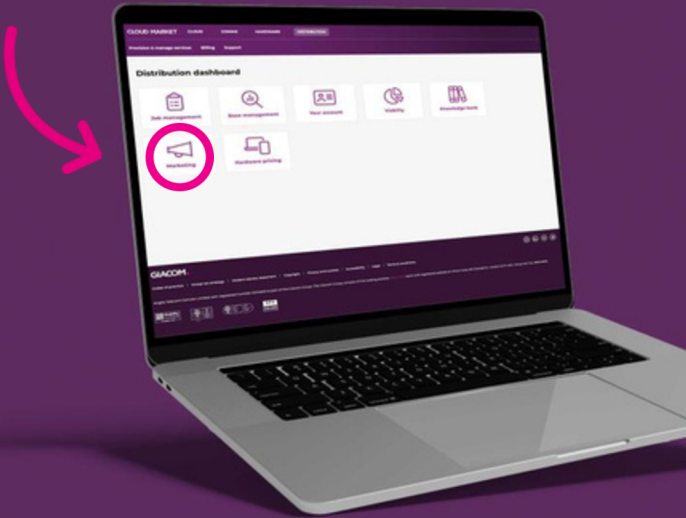
Business Evolve SIMO				
24 Month				
Tariff	Line Rental (ex. VAT)	Bonus	Partner Advance	Duration
Business Evolve Basics 6GB	£12.00	£0.00	£115.20	24 Month
Business EvolveBasics 100GB	£17.00	£0.00	£163.20	24 Month
Business Evolve Unlimited	£24.00	£0.00	£230.40	24 Month

These promotional tariffs includes unlimited Calls and SMS.



Free Marketing Assets
on Cloud Market

As a Giacom partner, you can give your business the competitive edge with a range of free assets from Vodafone. On Cloud Market, you will find access to imagery, toolkits and more to help you market the Vodafone Business proposition to your customers.



Introduction

[Why GiacomforNetwork Billed](#)
[Sign up to the Vodafone Portal](#)
[Why Vodafone](#)
[What's new?](#)

Business Evolve

[External Documents & Resources](#)
[About](#)
[Example Deals](#)

Business Integrated

[External Documents & Resources](#)
[Shared Data Plans - About](#)
[Data Pool & Shared Data Plan - Diagram](#)
[Unlimited Data Plans - About](#)
[Unlimited Data Plans - Diagram](#)

Additional Information

[MBB](#)
[Enterprise Edition & Business Optimiser](#)
[Meet the Team](#)

External Documents and Resources

[EU Roaming](#)
[Forms & Information](#)
[Spend Caps](#)
[Terms & Conditions](#)
[Network SLAs](#)
[Purchase Order Requirements](#)

View all tariffs and bonuses
within the [Library Guides](#) on
Cloud Market

BUSINESS EVOLVE

A flexible approach
to buying mobile



3 reasons to choose Business Evolve



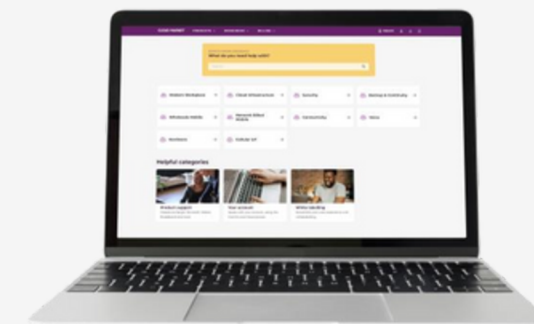
Your Data, Your Way



Data+ Included



All Plans are 5G Ready



To view all Network Billed Mobile
product collateral, please visit
Knowledgebase on Cloud Market.

[Visit Knowledgebase](#)

Introduction

Why GiacomforNetwork Billed
Sign up to the Vodafone Portal
Why Vodafone
What's new?

Business Evolve

External Documents & Resources
About
Example Deals

Business Integrated

External Documents & Resources
Shared Data Plans - About
Data Pool & Shared Data Plan - Diagram
Unlimited Data Plans - About
Unlimited Data Plans - Diagram

Additional Information

MBB
Enterprise Edition & Business Optimiser
Meet the Team

External Documents
and Resources

EU Roaming
Forms & Information
Spend Caps
Terms & Conditions
Network SLAs
Purchase Order Requirements

View all tariffs and bonuses
within the Library Guides on
Cloud Market

Business Evolve – About

Free EU Roaming on
36 Month plans

Data +

Customers on tariffs with
Data + can continue
using data after they
have used their inclusive
allowance. The speed is
throttled at 2mbps.

Why Giacom?

Best advance payments
compared to our
competitors who may
only offer 19 months
upfront rev share
advance whereas we
offer up to 36 months.

How To:

Customers can choose to either have individual data across their employees (Single User plans) or share their data across the business (Shared Data plans). Single and shared accounts cannot be mixed.

In order for the account to share data you must select a sharer enabler bolt-on per connection on the Business Starter tariffs. Business Voice and Business Data tariffs can be included on the sharer account but do not need a sharer enabler bolt-on. Business Starter 1GB will default as a sharer member, you can choose a free of charge SOC to make a Business Starter 1GB connection a lead or deputy.

Business Evolve Tariff Information:
If the customer opts for a shared account, the data pool will be added together and split between the members of the account inc. the lead and deputy on the account.

- **Lead** - mandatory on a shared account. Incurs all the charges incurred by the group and receives all notifications. Can only be assigned to one user on the customer account
- **Deputy (optional)** - receives all the notifications same as the lead. Can only be assigned to one user on the customer account
- **Member** - is any other user on the shared account
-


1 to 250 connections (Up to 250 connections for a limited time only- will revert back to 150 connections at a later date)


Business Evolve Tariff Commercial & Inclusions


See Inclusions Sheet

40% Revenue Share is paid across all standard Evolve plans

40% Revenue share is paid across 30 day SIMO plans

 Bonuses paid on qualifying new connections and ports (Excl. SIMO)

 Advance payments for SIMO are only paid for new contracts. All SIMO resins are paid rev. share monthly

 Line Rentals over £70 on 36 month terms are not payable in advance. Rev. Share is paid monthly for the duration of the contract term on the affected plans. Sharer enabler is payable in advance



Introduction

[Why GiacomforNetwork Billed](#)
[Sign up to the Vodafone Portal](#)
[Why Vodafone](#)
[What's new?](#)

Business Evolve

[External Documents & Resources](#)
[About](#)
[Example Deals](#)

Business Integrated

[External Documents & Resources](#)
[Shared Data Plans - About](#)
[Data Pool & Shared Data Plan - Diagram](#)
[Unlimited Data Plans - About](#)
[Unlimited Data Plans - Diagram](#)

Additional Information

[MBB](#)
[Enterprise Edition & Business Optimiser](#)
[Meet the Team](#)

External Documents and Resources

[EU Roaming](#)
[Forms & Information](#)
[Spend Caps](#)
[Terms & Conditions](#)
[Network SLAs](#)
[Purchase Order Requirements](#)

View all tariffs and bonuses
within the [Library Guides](#) on
Cloud Market

Business Evolve Example Deal Including Device

Tariff: Business Evolve Starter 25GB* £52 (36)

Handset: S23 Ultra

Handset price: £1,028.81

Line Rental: £52

Duration: 36 Month

Bonus: £422.00

Advance Total: £748.80

Total: £1,170.80

Your Margin: £141.99



Business Evolve Example Deal SIM Only

Tariff: Business Evolve Unlimited* £23.75 (24)

Line Rental: £23.75

Duration: 24 Month

Advance Total: £228

Your Margin: £228



SIMO Tariff Information:

- Unlimited minutes and texts
- Unlimited Data
- 5G ready as standard- no bolt on required

Entertainment packages include a choice of YouTube Premium, Spotify Premium or Amazon Prime

Introduction

[Why GiacomforNetwork Billed](#)
[Sign up to the Vodafone Portal](#)
[Why Vodafone](#)
[What's new?](#)

Business Evolve

[External Documents & Resources](#)
[About](#)
[Example Deals](#)

Business Integrated

[External Documents & Resources](#)
[Shared Data Plans - About](#)
[Data Pool & Shared Data Plan - Diagram](#)
[Unlimited Data Plans - About](#)
[Unlimited Data Plans - Diagram](#)

Additional Information

[MBB](#)
[Enterprise Edition & Business Optimiser](#)
[Meet the Team](#)

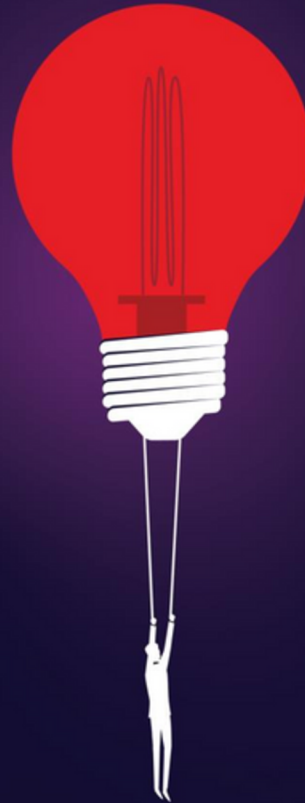
External Documents and Resources

[EU Roaming](#)
[Forms & Information](#)
[Spend Caps](#)
[Terms & Conditions](#)
[Network SLAs](#)
[Purchase Order Requirements](#)

View all tariffs and bonuses
within the [Library Guides](#) on
Cloud Market

BUSINESS INTEGRATED

As smoother, smarter
data sharing plan for
250+ connections



3 reasons to choose Business Integrated



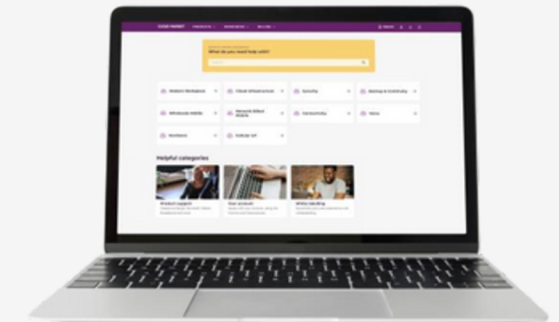
Removing business borders



Smarter Data



5G included as standard



To view all Network Billed Mobile
product collateral, please visit
Knowledgebase on Cloud Market.

[Visit Knowledgebase](#)

Introduction

[Why GiacomforNetwork Billed](#)
[Sign up to the Vodafone Portal](#)
[Why Vodafone](#)
[What's new?](#)

Business Evolve

[External Documents & Resources](#)
[About](#)
[Example Deals](#)

Business Integrated

[External Documents & Resources](#)
[Shared Data Plans - About](#)
[Data Pool & Shared Data Plan - Diagram](#)
[Unlimited Data Plans - About](#)
[Unlimited Data Plans - Diagram](#)

Additional Information

[MBB](#)
[Enterprise Edition & Business Optimiser](#)
[Meet the Team](#)

External Documents and Resources

[EU Roaming](#)
[Forms & Information](#)
[Spend Caps](#)
[Terms & Conditions](#)
[Network SLAs](#)
[Purchase Order Requirements](#)

View all tariffs and bonuses within the [Library Guides](#) on Cloud Market

Business Integrated Shared Data Plans - About

What is it?

Data Sharing plans are more efficient and cost-effective than giving everyone a set data allowance that they may not use, allowing you to pool and share data to suit the way your people work.

Who is it for?

For your employees that often do business abroad, Business Integrated offers inclusive roaming and international bundles for up to 62 destinations with Pro plans: EU, USA plus other top trading destinations such as Australia, Canada, China, India, Japan, Qatar, Singapore and much more.
Lite plans are for employees that travel abroad occasionally or not at all, which include UK-only benefits and worry-free pay per day roaming in over 150 Destinations.

Highlights

- Flexible: Choose any combination of Lite, Extra and Pro plans that best suits the business and your employees.
- Cost effective shared data: Vodafone's data sharing plans are more efficient and cost-effective than giving everyone a set data allowance that they may not use, allowing you to pool and share data to suit the way you want.
- International Mobility: Top business destinations are included – the EU & USA starting with Extra plans, with even more added into the Pro plans.

Roaming and International Offer:

- **Lite:** Occasional or no travel needs. Roaming is free in Isle of Man, Iceland, Norway and ROI.
- **Extra:** Best for regular travel to the EU and USA, allowing use of UK allowances in all of the Lite destinations as well as the EU & USA and within destination usage.
- **Pro:** Global usage, an additional 15 top business destinations included. Use your UK allowance in Australia, Brazil, Canada, China, India, Israel, Japan, Mexico, New Zealand, Qatar, Singapore, South Africa, Switzerland, Thailand & Turkey* (subject to fair usage).

How to build the tariff

Step 1

Choose the way you want to use data for all your account connections: Shared Data plans or Unlimited Data plans. The two types of plans cannot be mixed.

Step 2

Choose SIMO or handset plans

Step 3

Choose any combo of Lite, Extra and Pro plans that best suit the business and your employees needs.

Step 4

Add optional services for international roaming. Additional bundles or rate discounts are available.

Step 5

Control Spending by applying relevant voice, data and SMS caps through spend caps.



Introduction

[Why GiacomforNetwork Billed](#)
[Sign up to the Vodafone Portal](#)
[Why Vodafone](#)
[What's new?](#)

Business Evolve

[External Documents & Resources](#)
[About](#)
[Example Deals](#)

Business Integrated

[External Documents & Resources](#)
[Shared Data Plans - About](#)
[Data Pool & Shared Data Plan - Diagram](#)
[Unlimited Data Plans - About](#)
[Unlimited Data Plans - Diagram](#)

Additional Information

[MBB](#)
[Enterprise Edition & Business Optimiser](#)
[Meet the Team](#)

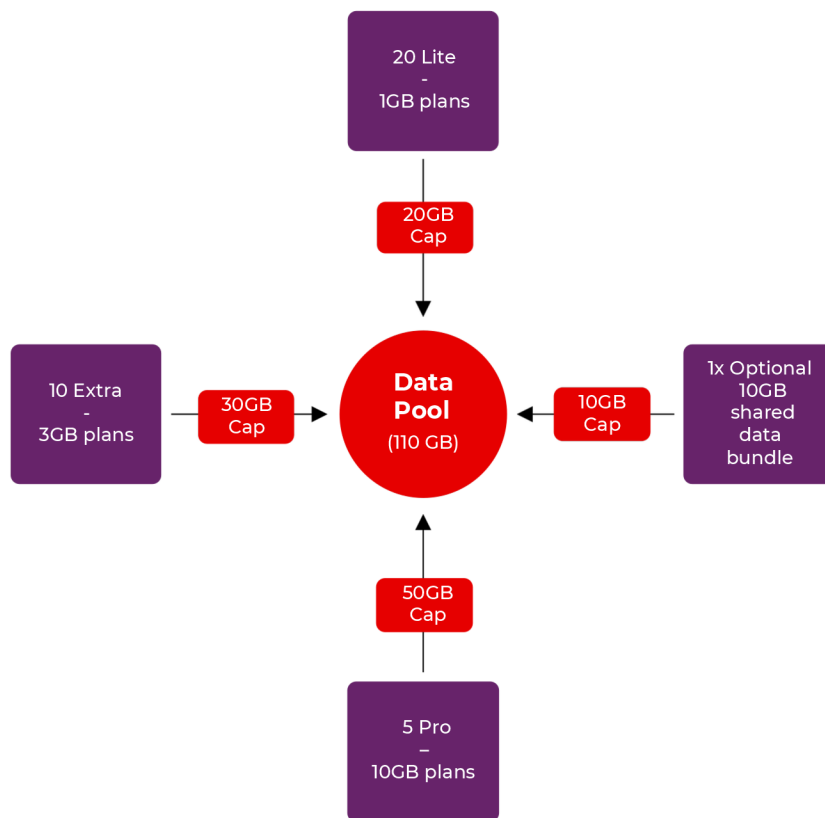
External Documents and Resources

[EU Roaming](#)
[Forms & Information](#)
[Spend Caps](#)
[Terms & Conditions](#)
[Network SLAs](#)
[Purchase Order Requirements](#)

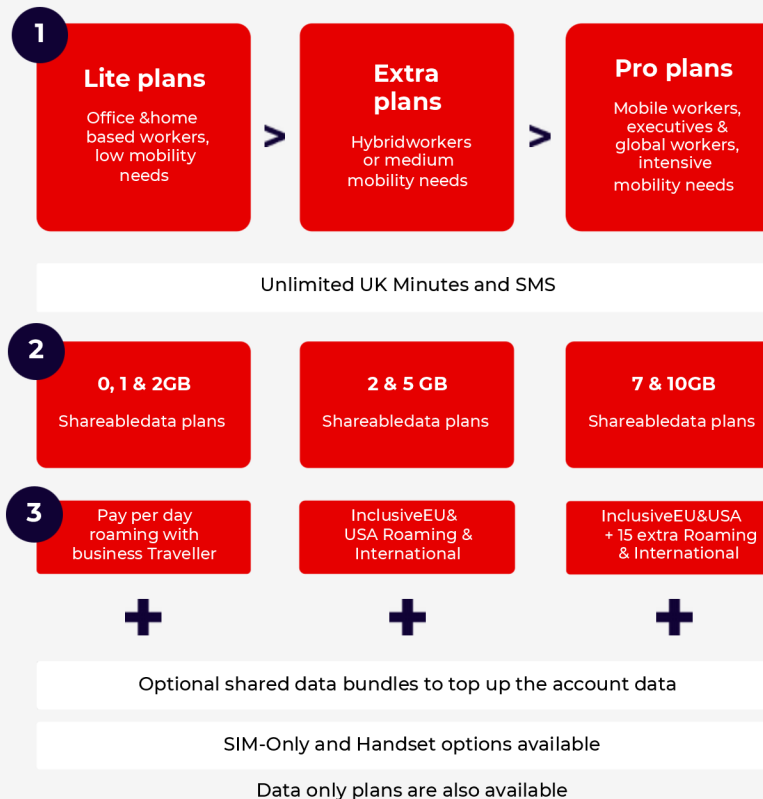
View all tariffs and bonuses within the [Library Guides](#) on Cloud Market

Business Integrated – Shared Data

The employee's data allowance is placed in a pool with data of other employees in the account.



How does it work?



Introduction

Why GiacomforNetwork Billed
Sign up to the Vodafone Portal
Why Vodafone
What's new?

Business Evolve

External Documents & Resources
About
Example Deals

Business Integrated

External Documents & Resources
Shared Data Plans - About
Data Pool & Shared Data Plan - Diagram
Unlimited Data Plans - About
Unlimited Data Plans - Diagram

Additional Information

MBB
Enterprise Edition & Business Optimiser
Meet the Team

External Documents
and Resources

EU Roaming
Forms & Information
Spend Caps
Terms & Conditions
Network SLAs
Purchase Order Requirements

View all tariffs and bonuses
within the Library Guides on
Cloud Market

Business Integrated Unlimited Data Plans - About

How does it work?

Business Integrated allows businesses to mix and match between various tariffs for various employee profiles, with their data pooled across the entire account or with unlimited data. You can have 50 to 20,000 connections on an account.

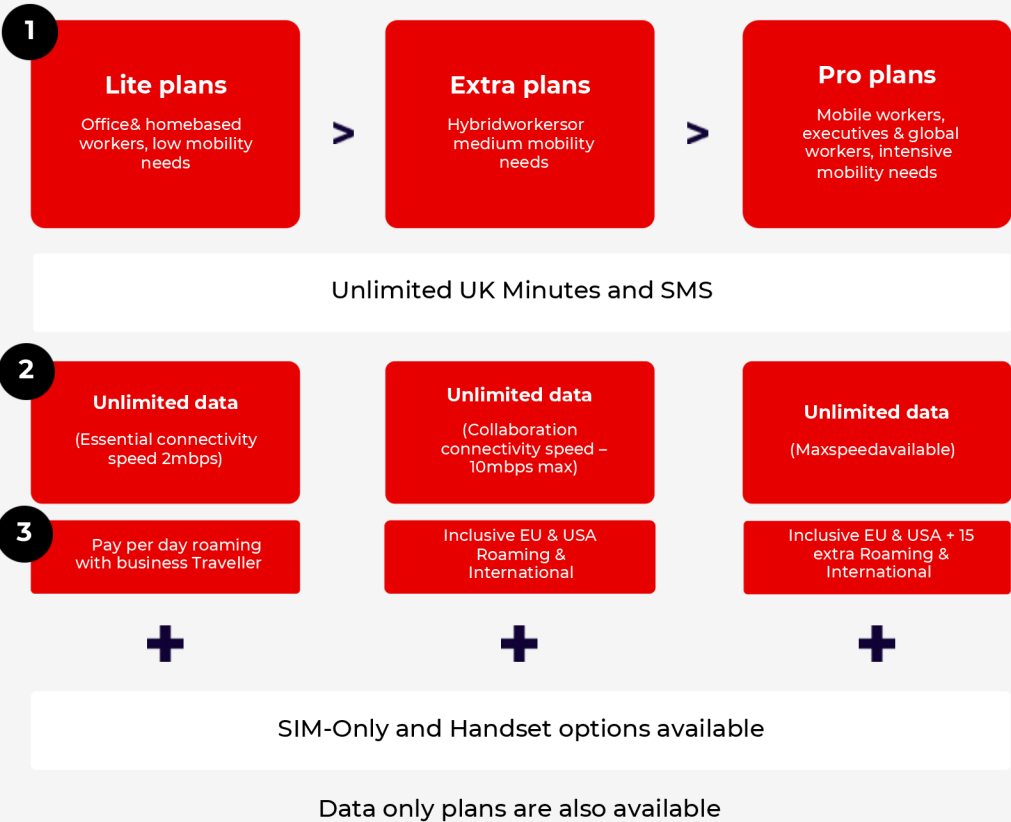
Mobile data speed limits apply to the Business Integrated Lite & Extra Unlimited Data plans. The maximum upload and download speeds you could experience on your device with these plans are as follows: Business Integrated Lite Voice & Data plans – 2Mbps and Business Integrated Extra Voice & Data plans – 10Mbps.

Highlights

- Flexible: Choose any combination of Lite, Extra and Pro plans that best suits the business, and your employee's needs.
- Unlimited Data: Concerns about running out of data or incurring out of bundle charges can get in the way. Keep things super single with Unlimited plans – no more worries about setting data caps, managing sharer plans or dealing with extra bills.
- International Mobility: Top business destinations are included: the EU & USA starting with Extra plans, with even more added in Pro plans (Australia, Canada, China, India, Japan and much more).



How does it work?



Introduction

- Why Giacomfor Network Billed
- Free Marketing Assets
- Why Vodafone
- What's new?

Business Evolve

- External Documents & Resources
- About
- Example Deals

Business Integrated

- External Documents & Resources
- Shared Data Plans - About
- Data Pool & Shared Data Plan - Diagram
- Unlimited Data Plans - About
- Unlimited Data Plans - Diagram

Additional Information

- MBB
- Enterprise Edition & Business Optimiser
- Meet the Team

External Documents and Resources

- EU Roaming
- Forms & Information
- Spend Caps
- Terms & Conditions
- Network SLAs
- Purchase Order Requirements

View all tariffs and bonuses within the [Library Guides](#) on Cloud Market



Who can it work for

Maximum Speed

Here's what you can do



Unlimited Lite Plans
Essential connectivity

Office & home based relying mostly on Wi-Fi.
Low data users.

2mbps

Web browsing

Messaging and email

Making and receiving audio calls & conferences and low-resolution video calls (e.g. Microsoft Teams, Cisco Webex, VBUC)

Social media and messaging apps (e.g. LinkedIn, Facebook, WhatsApp, etc)

SD Video streaming



Unlimited Extra Plans
Collaboration connectivity

Hybrid workers.
Medium data users.

10mbps

Web browsing

Messaging and email

Making and receiving HD video calls, including conferences (e.g. Microsoft Teams, Cisco Webex, VBUC)

Social media and messaging apps (e.g. LinkedIn, Facebook, WhatsApp, etc)

HD Video streaming

Sending and receiving documents, images, audio and video files

Downloading, updating and using apps on the go

Accessing your company network

Use your phone as a hotspot for 1 user



Unlimited Pro plans
Pro connectivity

High mobility workers.
High data users.

Maximum available

Web browsing

Messaging and email

Making and receiving HD video calls, including conferences (e.g. Microsoft Teams, Cisco Webex, VBUC)

Social media and messaging apps (e.g. LinkedIn, Facebook, WhatsApp, etc)

4K Video streaming

Sending and receiving documents, images, audio and video files in less time

Downloading, updating and using apps on the go in less time

Accessing your company network

Confidently use your phone as a hotspot for multiple users

AR /VR

SAMSUNG

Galaxy S24 Series

Galaxy AI 🌟 is here



Image simulated.
Samsung account login
is required for certain AI
features. S Pen embedded
in Galaxy S24 Ultra only.

Introduction

[Why GiacomforNetwork Billed](#)
[Sign up to the Vodafone Portal](#)
[Why Vodafone](#)
[What's new?](#)

Business Evolve

[External Documents & Resources](#)
[About](#)
[Example Deals](#)

Business Integrated

[External Documents & Resources](#)
[Shared Data Plans - About](#)
[Data Pool & Shared Data Plan - Diagram](#)
[Unlimited Data Plans - About](#)
[Unlimited Data Plans - Diagram](#)

Additional Information

[MBB](#)
[Enterprise Edition & Business Optimiser](#)
[Meet the Team](#)

External Documents and Resources

[EU Roaming](#)
[Forms & Information](#)
[Spend Caps](#)
[Terms & Conditions](#)
[Network SLAs](#)
[Purchase Order Requirements](#)

View all tariffs and bonuses
within the [Library Guides](#) on
Cloud Market

With Business Optimiser you are always placed on the best plan

Automated managed service

around data usage

Noneedtoforcustomerstochoose
a set monthly data allowance

No need to make
contactduring the month to
adjust allowance, you are
automatically moved to the
best plan

View more information within the Library guide,
or contact your Partner Manager



Introduction

[Why Giacomfor Network Billed](#)
[Free Marketing Assets](#)
[Why Vodafone](#)
[What's new?](#)

Business Evolve

[External Documents & Resources](#)
[About](#)
[Example Deals](#)

Business Integrated

[External Documents & Resources](#)
[Shared Data Plans - About](#)
[Data Pool & Shared Data Plan - Diagram](#)
[Unlimited Data Plans - About](#)
[Unlimited Data Plans - Diagram](#)

Additional Information

[MBB](#)
[Enterprise Edition & Business Optimiser](#)
[Meet the Team](#)

External Documents and Resources

[EU Roaming](#)
[Forms & Information](#)
[Spend Caps](#)
[Terms & Conditions](#)
[Network SLAs](#)
[Purchase Order Requirements](#)

View all tariffs and bonuses
within the [Library Guides](#) on
Cloud Market

Keep connected on the go with Mobile Broadband

Vodafone Mobile Broadband plans are data only plans perfect for Dongles, Mobile WiFi's and Tablets, to keep customers always connected on the go.

Mobile WiFi Commercials

Available on 30 day/12m/24m & 36m terms.
40% revenue share paid

Data SIM Commercials

Available on 30 day, 12m, 24m and 36m terms. 8.7% rev share paid on 30 day and 12m, 40% revenue share paid on 24 and 36 month MBB plans

Business Integrated

Mobile broadband plans are available on the new Business Integrated plans



Introduction

[Why GiacomforNetwork Billed](#)
[Sign up to the Vodafone Portal](#)
[Why Vodafone](#)
[What's new?](#)

Business Evolve

[External Documents & Resources](#)
[About](#)
[Example Deals](#)

Business Integrated

[External Documents & Resources](#)
[Shared Data Plans - About](#)
[Data Pool & Shared Data Plan - Diagram](#)
[Unlimited Data Plans - About](#)
[Unlimited Data Plans - Diagram](#)

Additional Information

[MBB](#)
[Enterprise Edition & Business Optimiser](#)
[Meet the Team](#)

External Documents and Resources

[EU Roaming](#)
[Forms & Information](#)
[Spend Caps](#)
[Terms & Conditions](#)
[Network SLAs](#)
[Purchase Order Requirements](#)

View all tariffs and bonuses
within the [Library Guides](#) on
Cloud Market

Meet our multi-award winning team

Key Contacts

Distribution Sales

distribution.sales@giacom.com

03304 333 888 (option 1, 2, 1)

Hardware

hardware@giacom.com

distribution.hardware@giacom.com

Support Team

b2bconnections@giacom.com

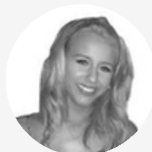
Product Team

mobileproduct@giacom.com



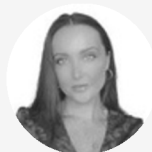
Marc Finney

Sales Manager
Marc.Finney@giacom.com
07880241622



Chelsey Millar

Mobile Campaign Manager



Jenni Higson

Mobile Product Manager



INTRODUCING SMART MOBILE DATA

Game-changing Cellular IoT powered connectivity

[Find out more](#)



Check out our
SMD vs. MBB
Comparison



Any questions on this handbook?

Please contact your Partner Manager
directly or alternatively:
distribution.sales@giacom.com
[03304 333 888](tel:03304333888) , Option 1, 2, 1